

PLAT ONE GREGOR WOODS

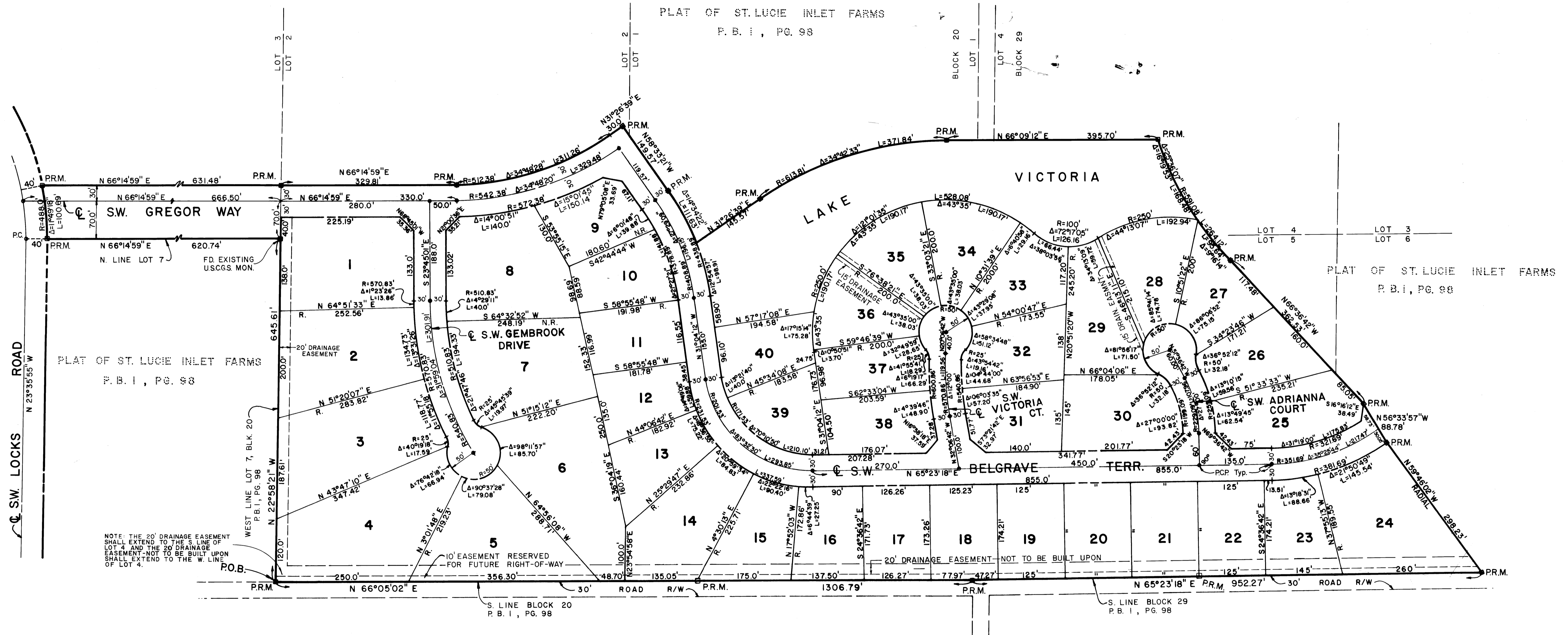
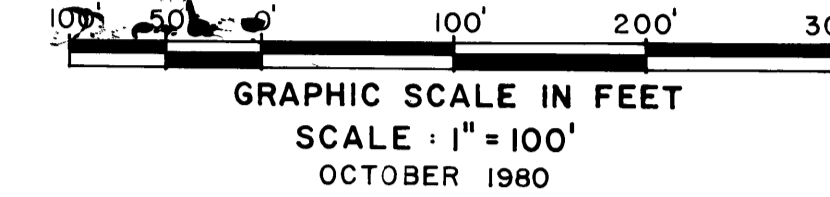
BEING A REPLAT OF BLOCKS 20 & 29, PLAT OF ST. LUCIE INLET FARMS, PLAT BK. I,
PG. 98 PUBLIC RECORDS OF PALM BEACH (NOW MARTIN) COUNTY, FLORIDA. ALL
LYING AND BEING IN THE HANSON GRANT.

I, LOUISE V. ISAACS, CLERK OF THE CIRCUIT COURT OF MARTIN COUNTY, FLORIDA, DO HEREBY CERTIFY THAT THIS PLAT WAS FILED FOR RECORD IN PLAT BOOK 8, PAGE 45, MARTIN COUNTY, FLORIDA, PUBLIC RECORDS, THIS DAY OF OCTOBER 1980.

LOUISE V. ISAACS, CLERK
CIRCUIT COURT
MARTIN COUNTY, FLORIDA

BY: _____
DEPUTY CLERK

FILE NO.: _____



NOTES:

- BEARINGS SHOWN HEREON REFER TO THE MERIDIAN SHOWN ON THE PLAT DEPICTING ST. LUCIE RIVER THROUGH PART OF ST. LUCIE INLET FARMS, AS RECORDED IN PLAT BOOK 2, PAGE 30, PUBLIC RECORDS OF MARTIN COUNTY, FLORIDA.
- THERE SHALL BE NO BUILDINGS OR STRUCTURES PLACED WITHIN OR UPON THE 20' DRAINAGE EASEMENT - NOT TO BE BUILT UPON AS SHOWN HEREON.
- THERE SHALL BE NO SPLITTING OR SUBDIVIDING OF LOTS WITHIN THIS PLAT EXCEPT FOR THE CREATION OF LARGER LOTS.
- ACCESS TO ALL LOTS SHALL BE FROM INTERNAL ROAD SYSTEMS ONLY.

THIS INSTRUMENT WAS PREPARED BY CRAIG L. WALLACE, AT THE OFFICE OF WILLIAM G. WALLACE, INC. 321 NORTHLAKE BLVD., SUITE 109, NORTH PALM BEACH, FLORIDA 33409.

PLAT ONE GREGOR WOODS

WILLIAM G. WALLACE, INC. CONSULTING ENGINEERS, LAND PLANNERS & SURVEYORS 321 NORTHLAKE BLVD. NORTH PALM BEACH, FL 33408 • 305/842-4233 3241 SW MARR RD. PALM CITY PLAZA PALM CITY, FL 33480 • 305/283-0208			
FIELD	G. Z.	JOB NO	J80-792
OFFICE	F. M.	DATE	AUG., 1980
CK'D	W.D.J.	REF	
		FR	GW PG
		DWG NO	80-479
		SHEET	2 OF 2